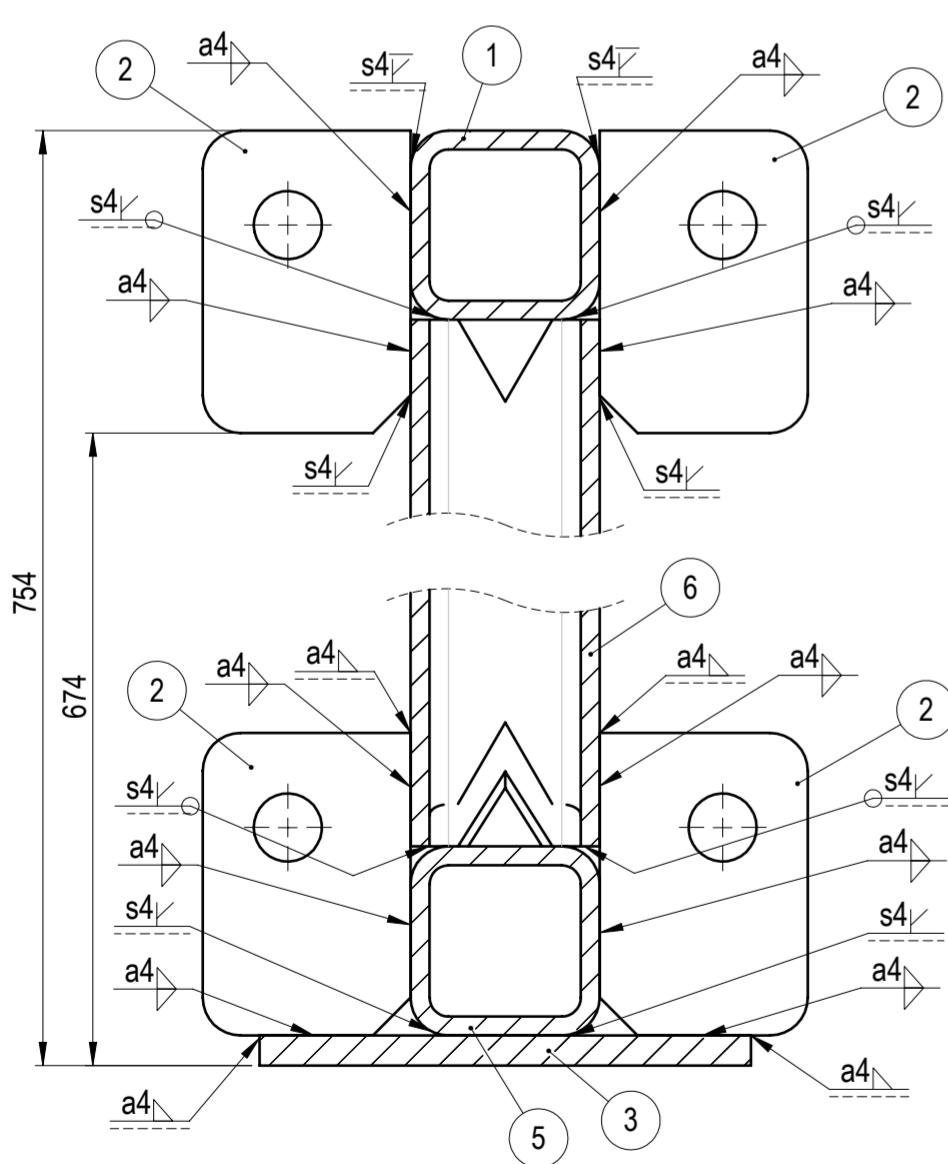
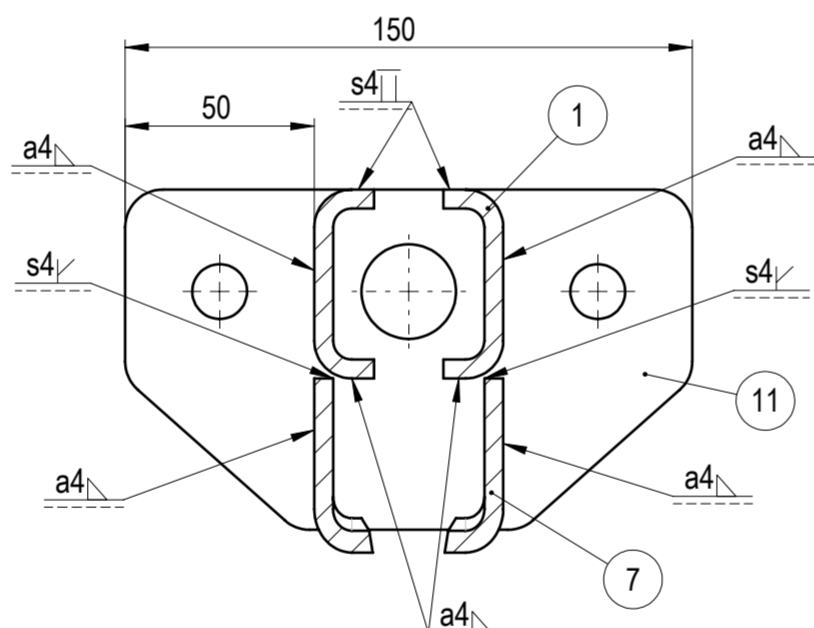


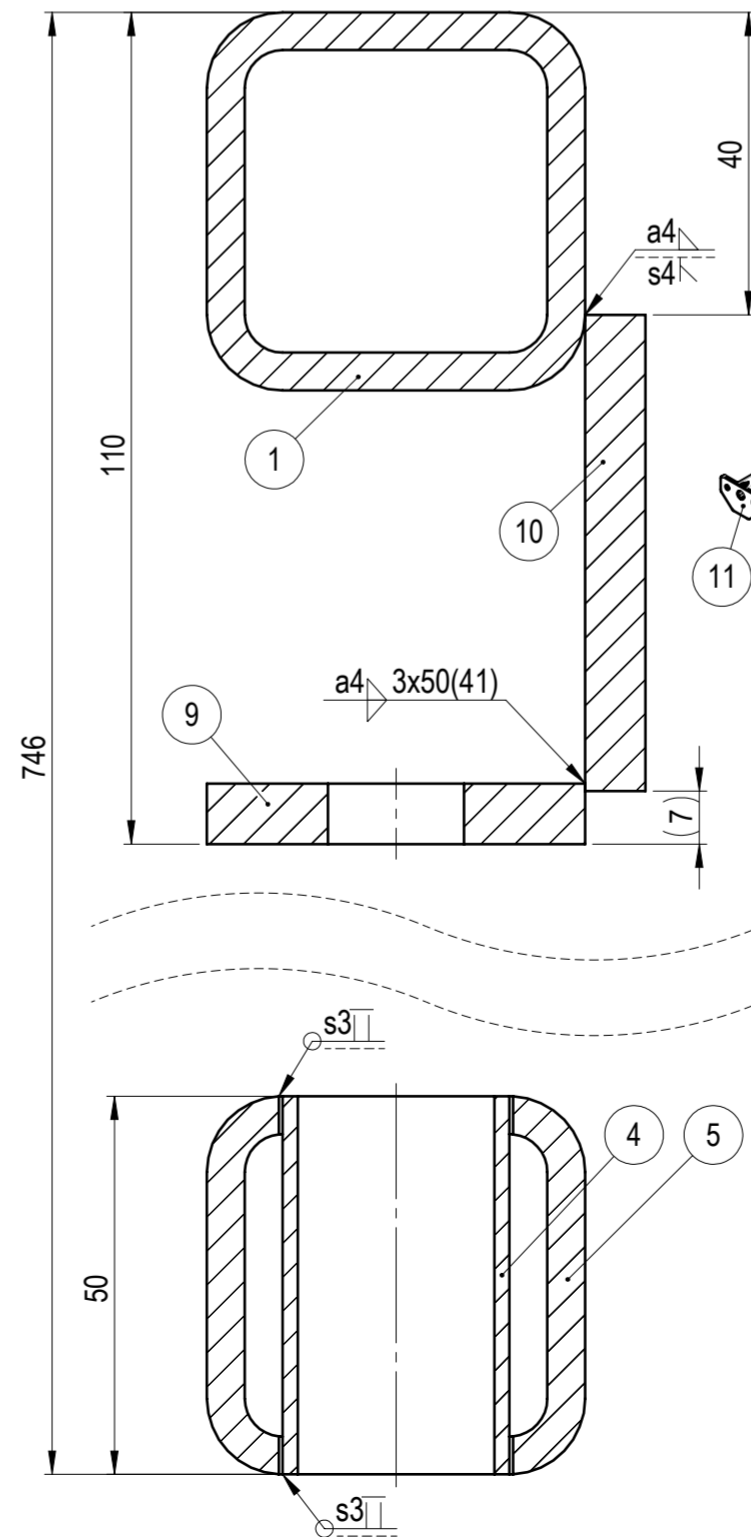
A-A
90,00°
SCALE: 1 : 2



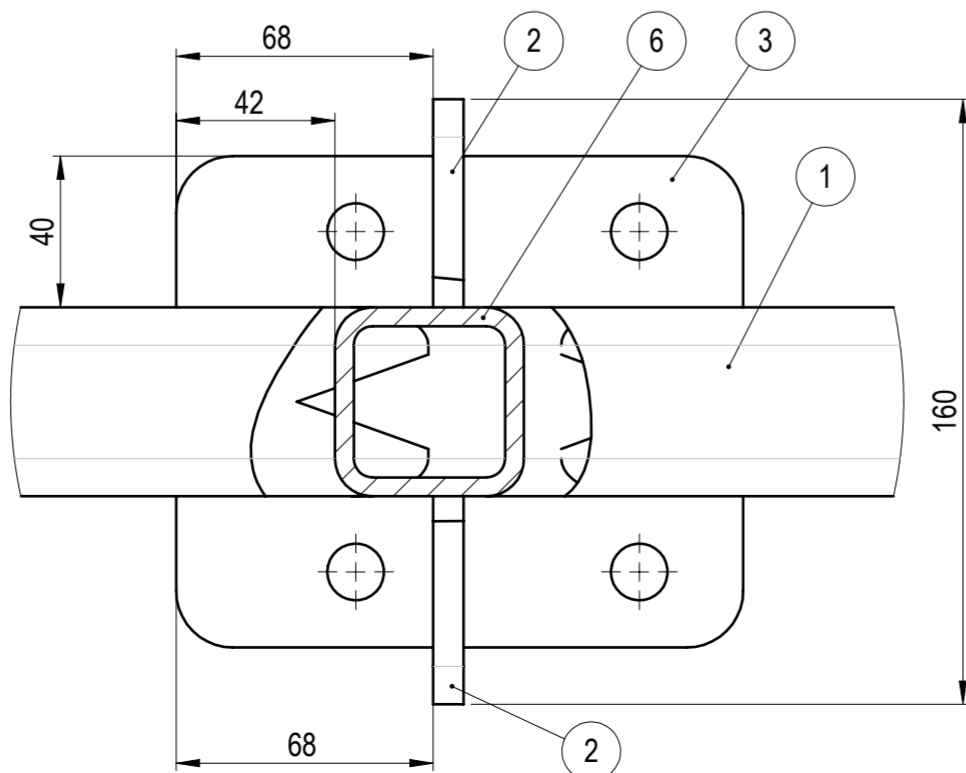
B-B
SCALE: 1 : 2



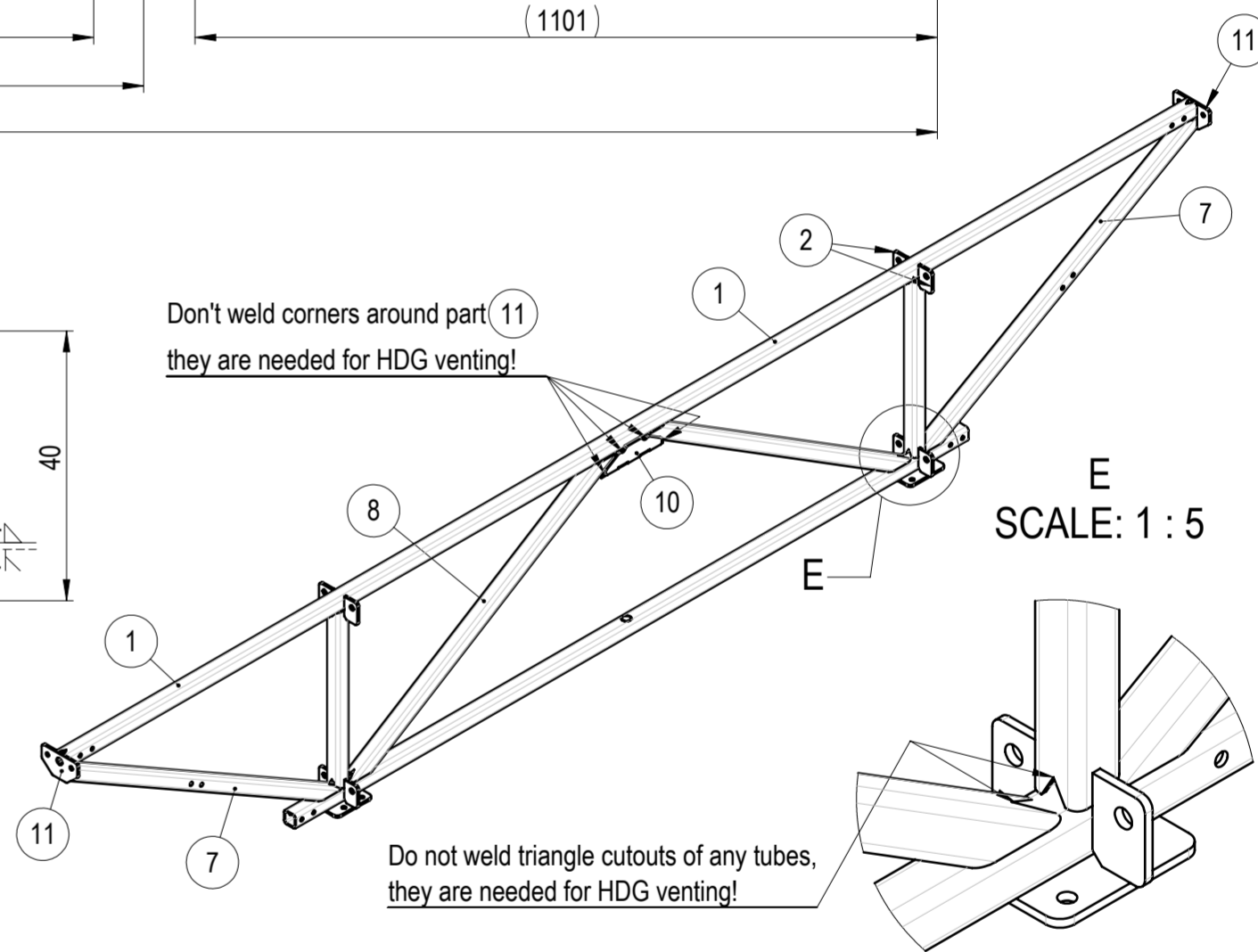
D-D
SCALE: 1 : 1



C
SCALE: 1 : 2



Don't weld corners around part (11)
they are needed for HDG venting!



E
SCALE: 1 : 5

NO.	PART NO	DESCRIPTION	MATERIAL	PROCESSING	REVISION	WEIGHT	QTY
1	105-09221-01	Top tube	S355J2	CND		30.81	1
2	105-09221-05	Tie link flange	S355J2	LC		0.25	8
3	105-09221-07	Bottom flange hanger frame	S355J2	LC		1.16	2
4	105-09221-11	Sleeve	S235JR	CND		0.07	1
5	105-09222-02	Bottom tube 2	S355J2	CND		18.29	1
6	105-09223-01	Vertical tube 3	S355J2	CND		4.14	2
7	105-09223-03	Outside diagonal tube 3	S355J2	CND		8.19	2
8	105-09223-04	Inside diagonal tube 3	S355J2	CND		7.89	2
9	105-09223-05	Middle bracket 3	S355J2	LC		0.78	1
10	105-09223-06	Back plate 3	S355J2	LC		0.68	1
11	105-09223-07	Side flange 2	S355J2	LC		0.68	2

WEMPS
ENGINEERING SERVICES

MATERIAL	WEIGHT	DEBURR AND BREAK SHARP EDGES	REVISION	DATE
-	96.776 Kg	DO NOT SCALE DRAWING		02.06.2025
SURFACE PROTECTION	MACHINING	THERMAL CUTTING	WELDING	SCALE
HDG EN ISO 1461	ISO 2768 mK	ISO 9013 221	ISO 13920 BF	1:10
NAME	SIGNATURE	PART NO.	FORMAT	
Designed by D. Dislers		105-09223-00	A2	
Drawn by D. Dislers		DESCRIPTION		
Technical ref		Hanging frame weldment 3		

NAME	SIGNATURE	PART NO.	FORMAT
Designed by D. Dislers		105-09223-00	A2
Drawn by D. Dislers		DESCRIPTION	
Technical ref		Hanging frame weldment 3	